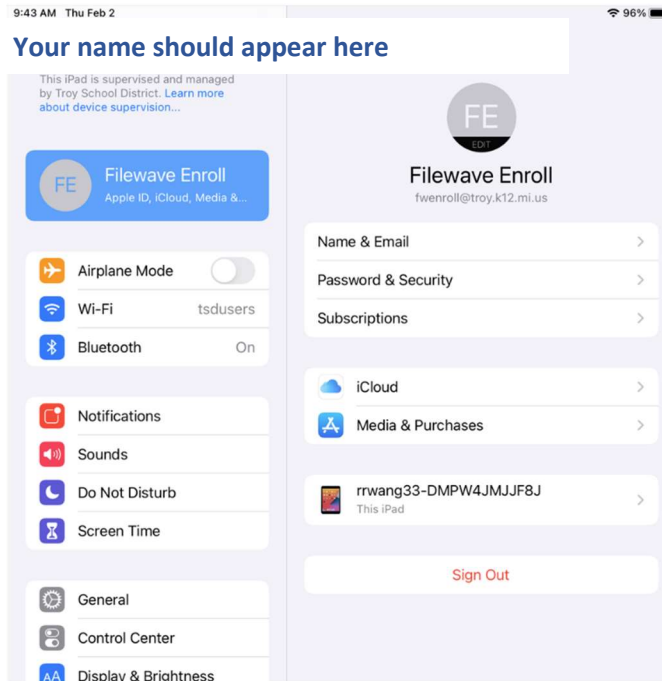


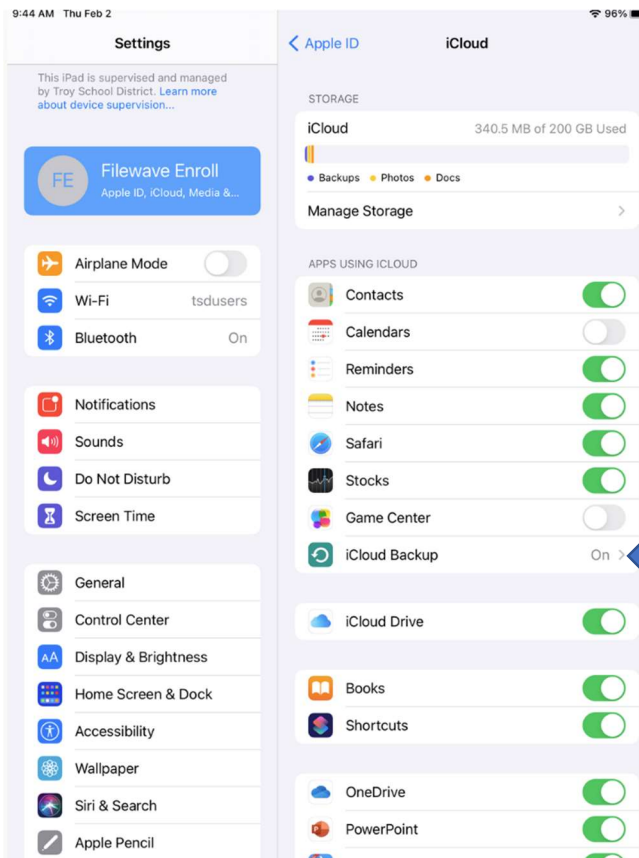
# iPad Backup, Wipe, and Restore Directions



Open Settings and confirm you are signed into your **TROY SCHOOL DISTRICT iCloud account**. Your account is your Troy School District email address and your password.

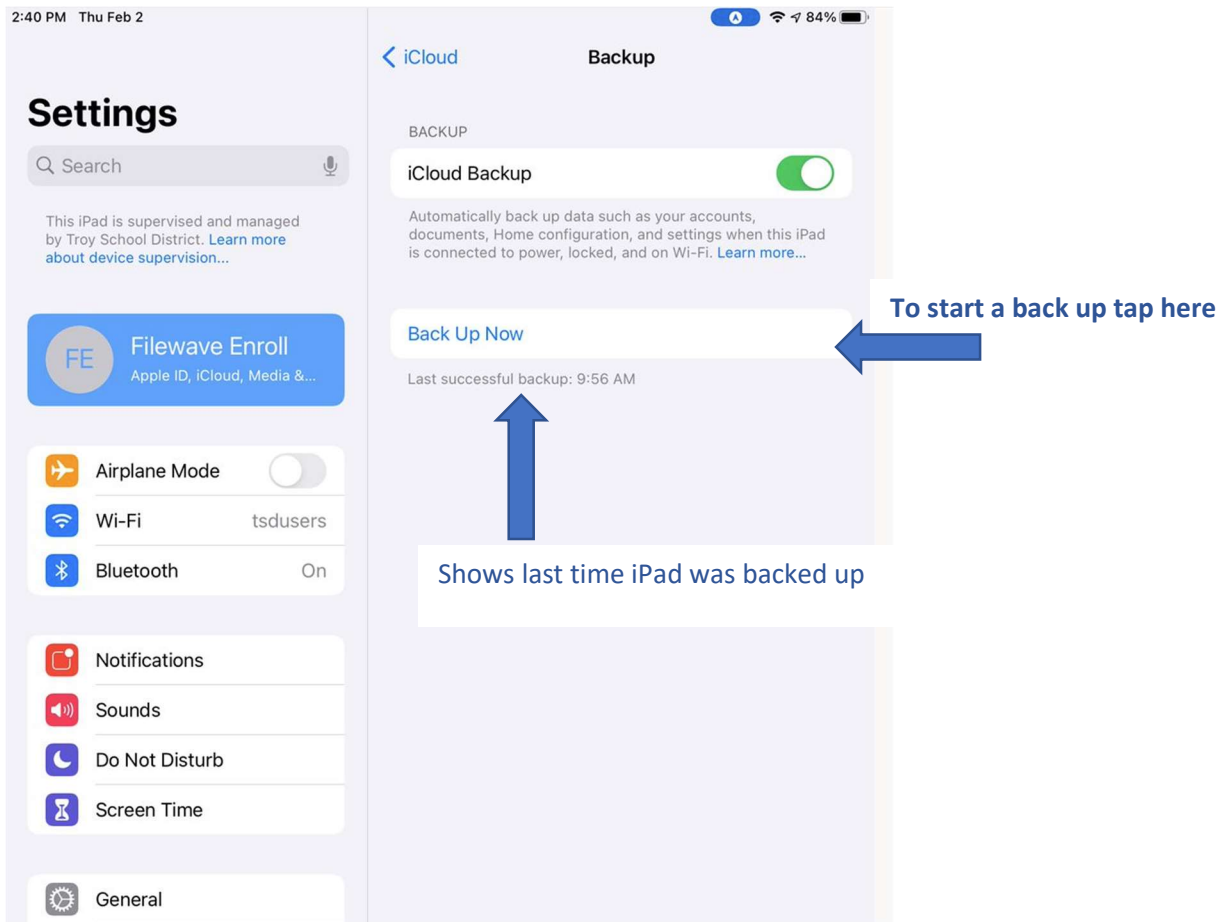


After you are logged into iCloud, open iCloud here.

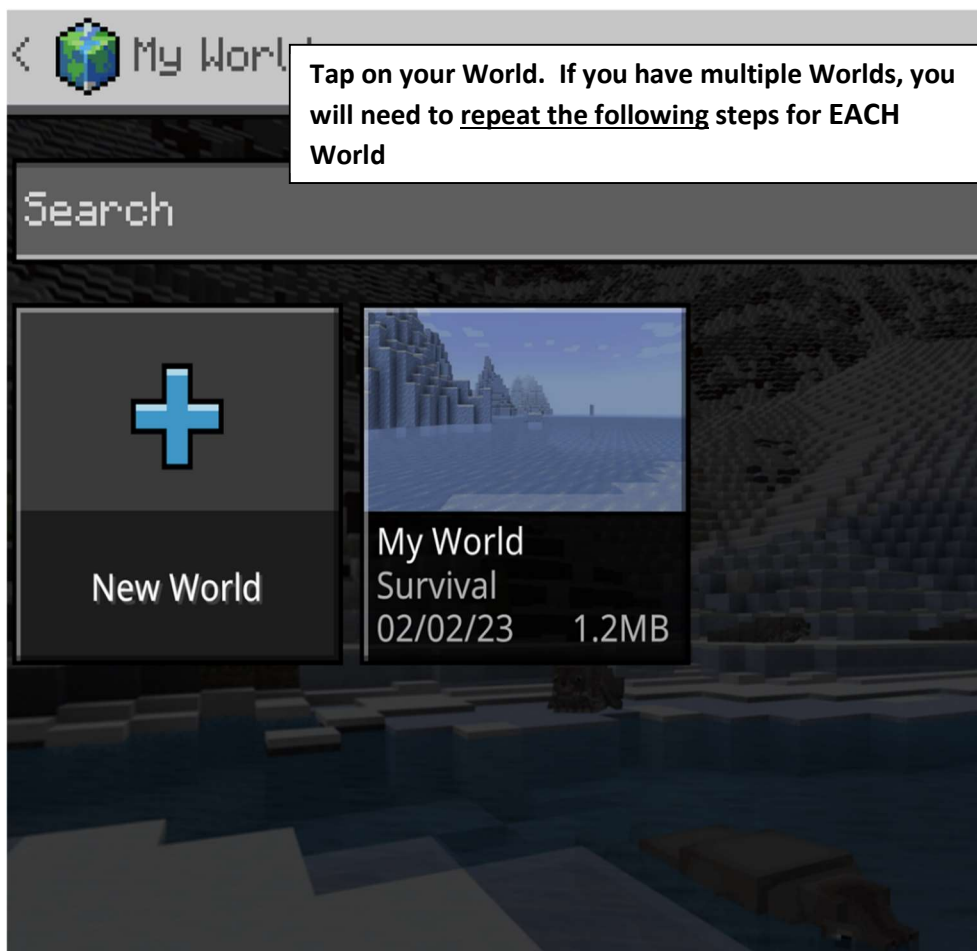
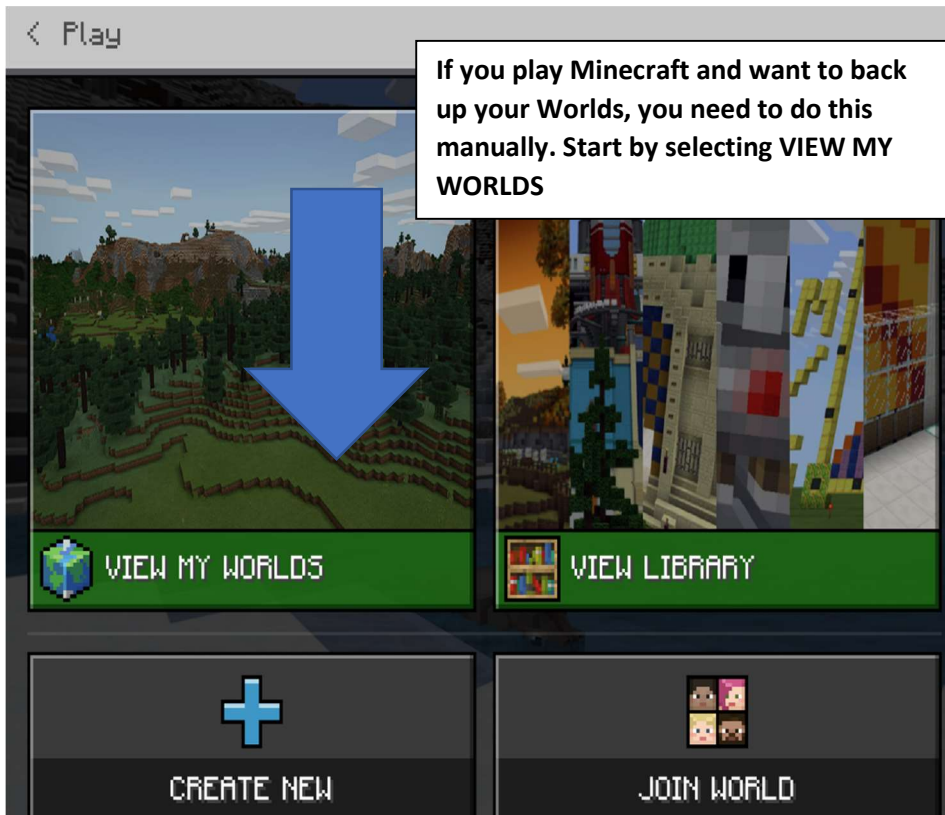


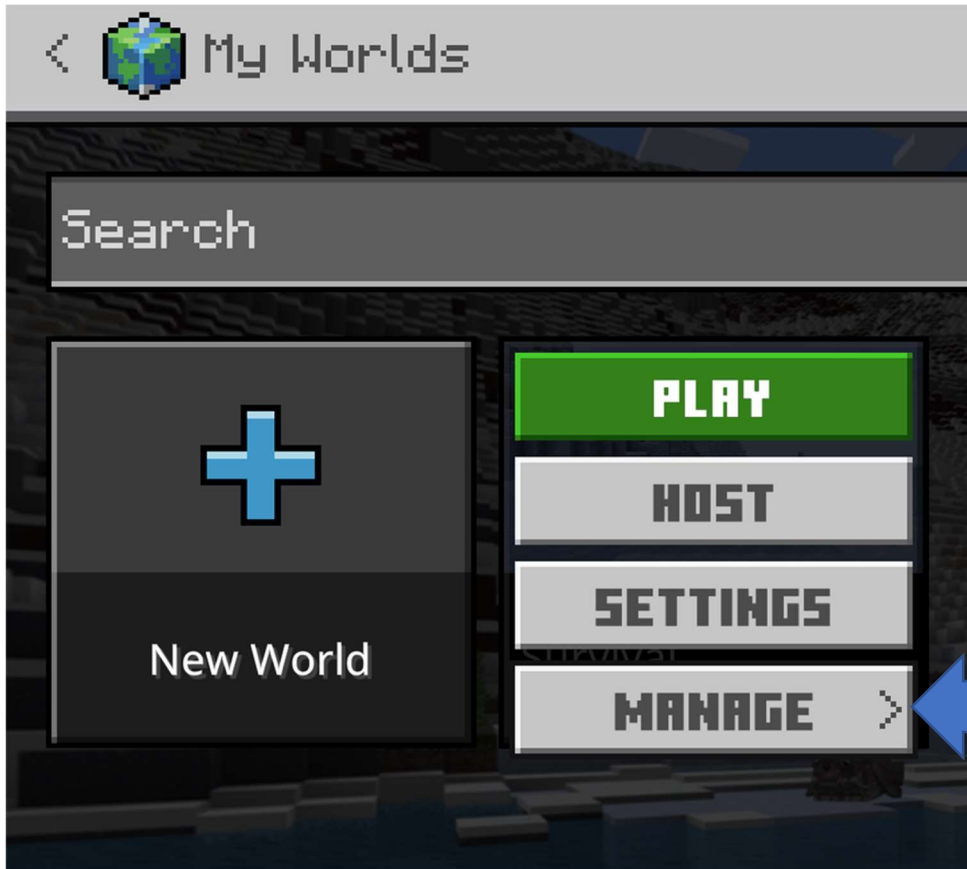
The green sliders indicate the app is being backed up to iCloud. You can turn backup on/off for each app with the slider.

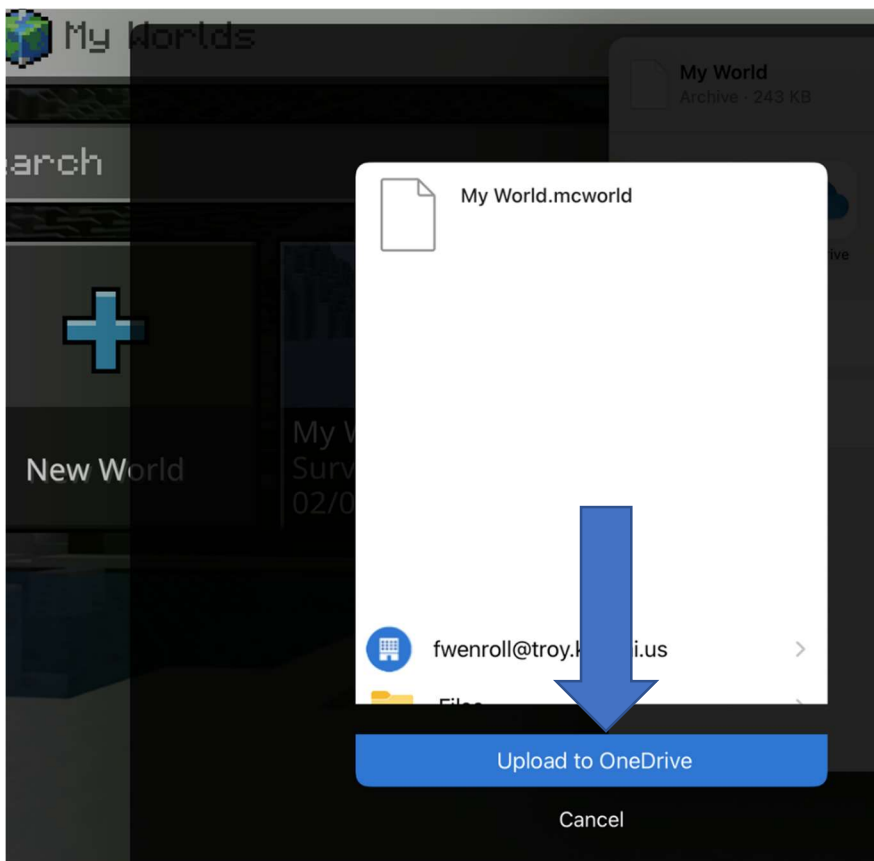
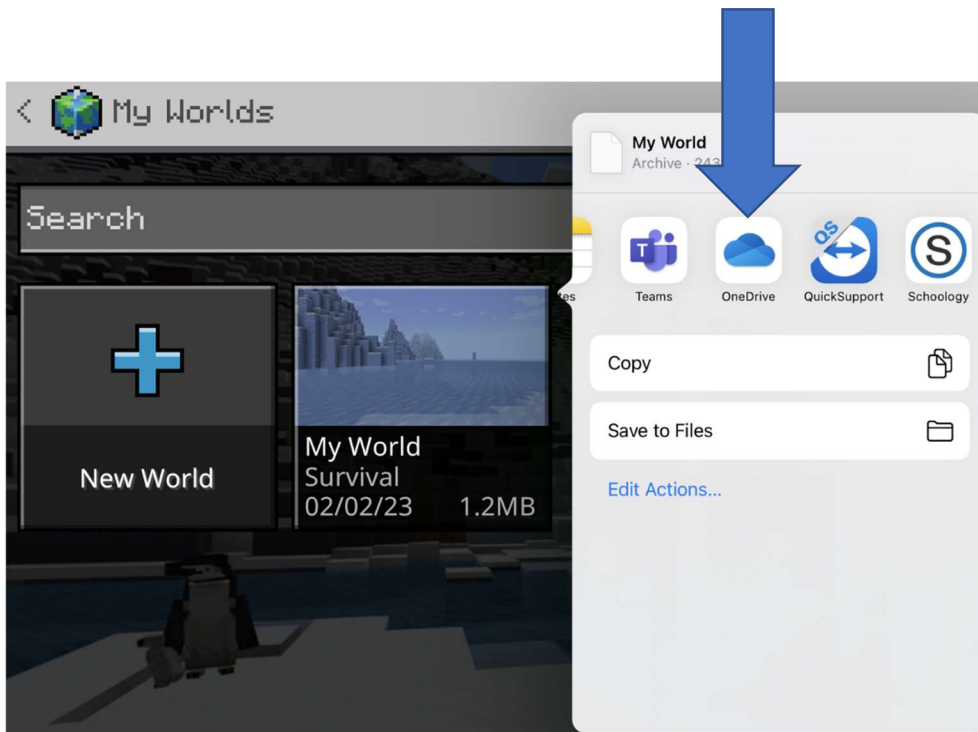
To start a backup or see when the last backup occurred click here. [Make sure iCloud Backup is On.](#)



## Minecraft Backup

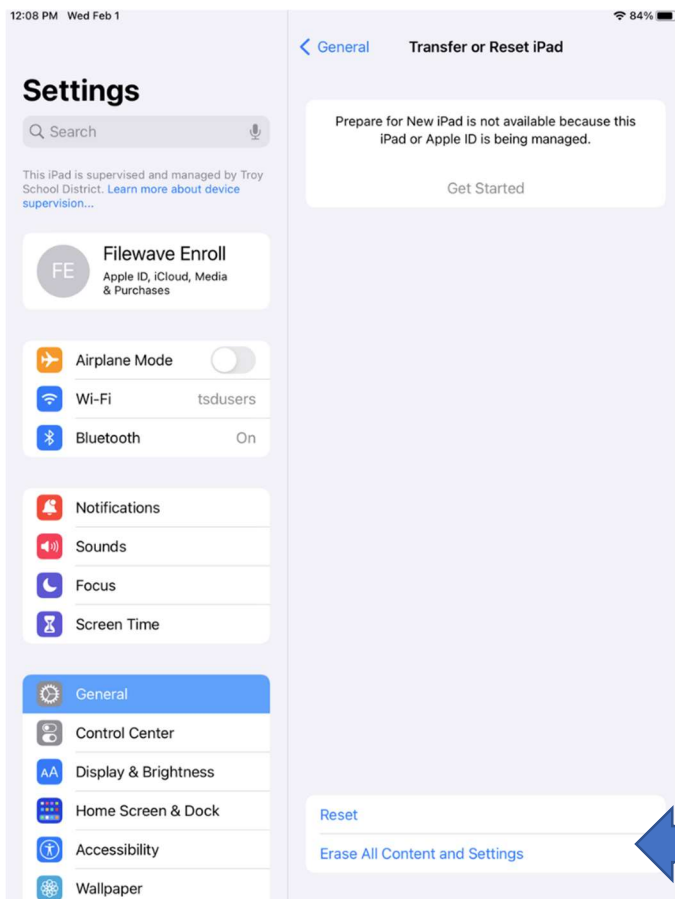
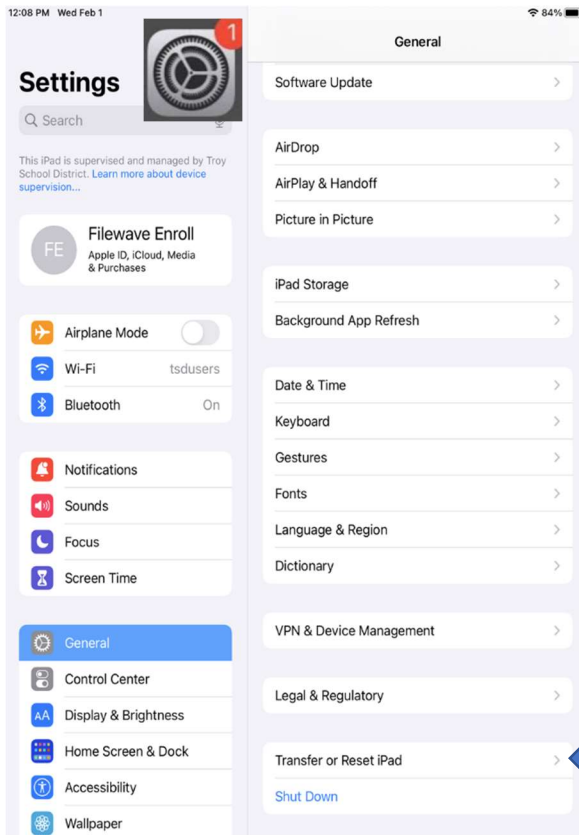






**REPEAT THESE STEPS FOR EACH WORLD YOU WANT TO BACKUP!!!**

## Wipe iPad (Factory Reset)



12:08 PM Wed Feb 1

84% 

## Erase This iPad

Erasing will sign out of your Apple ID and remove your personal data, so this iPad can be safely traded in or given away.

The following items will be safely removed from this iPad:



**Apps and Data**  
15.28 GB



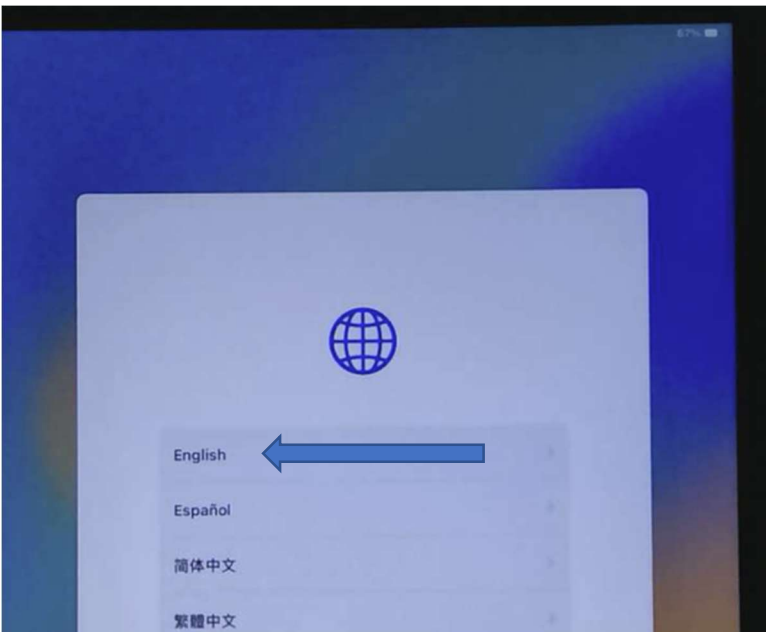
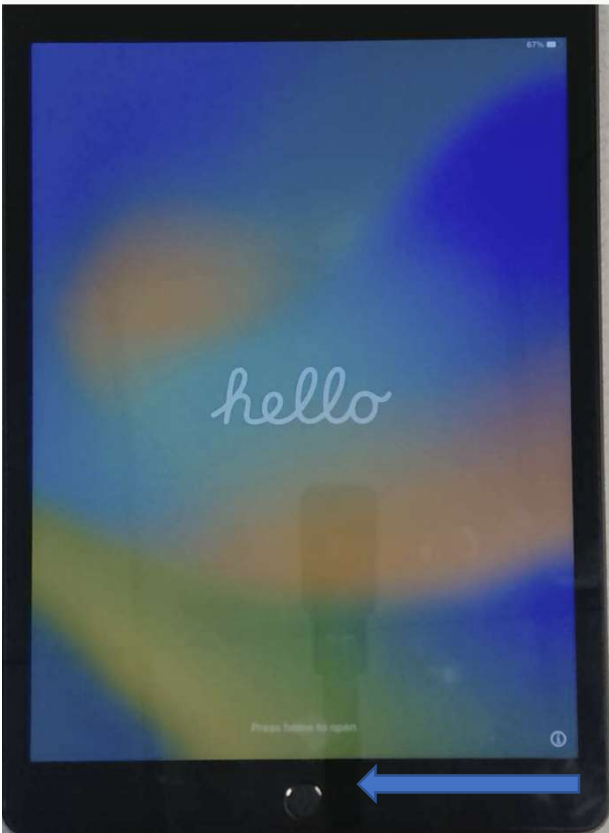
**Apple ID**  
Filewave Enroll



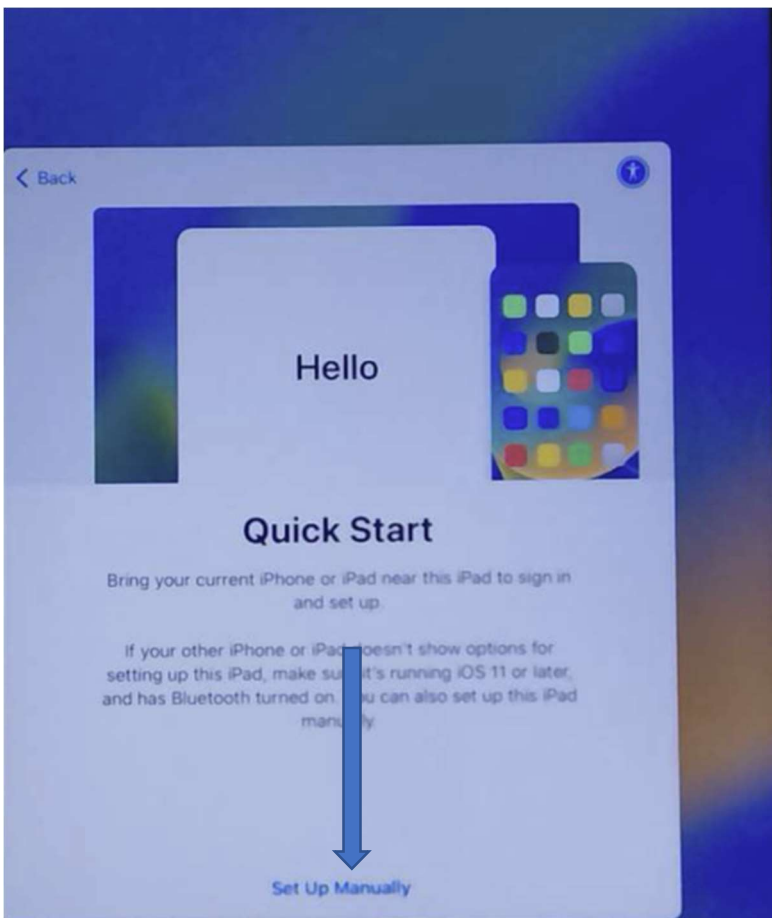
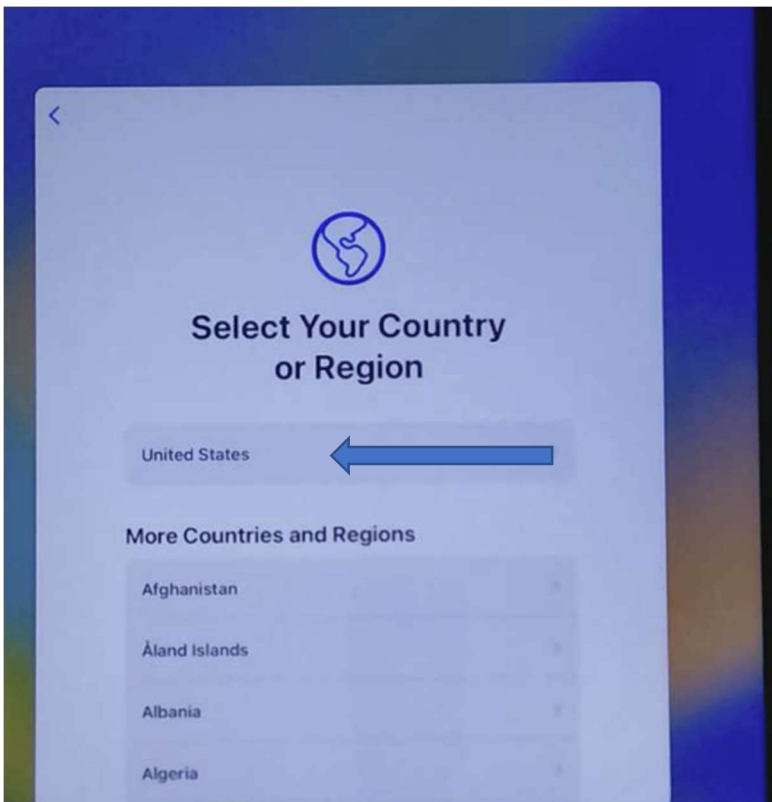
Continue

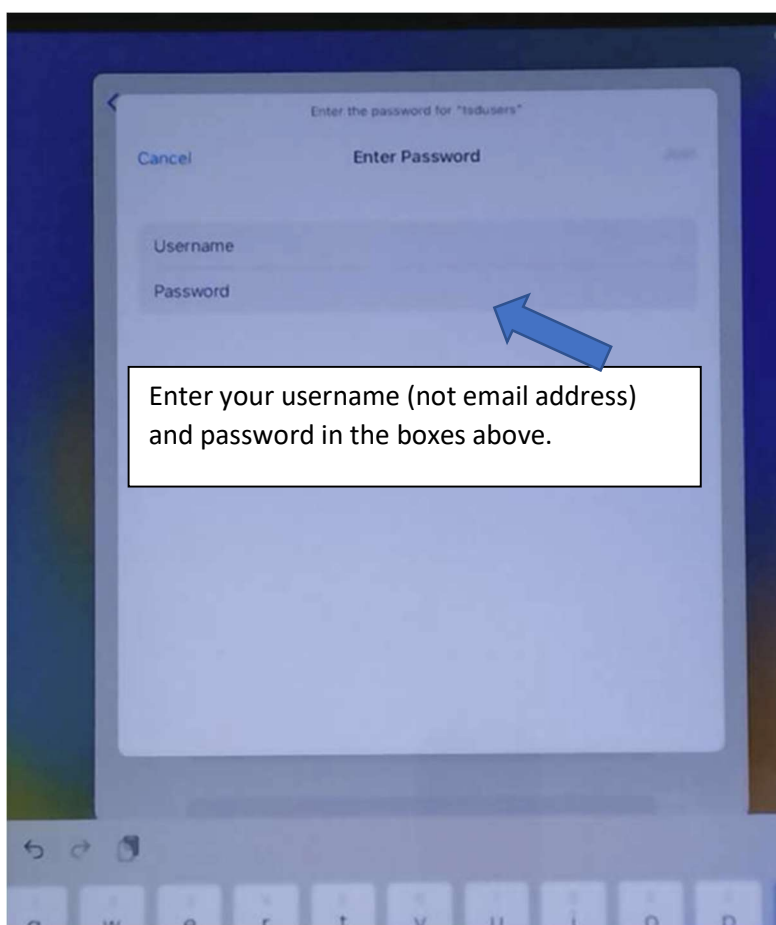
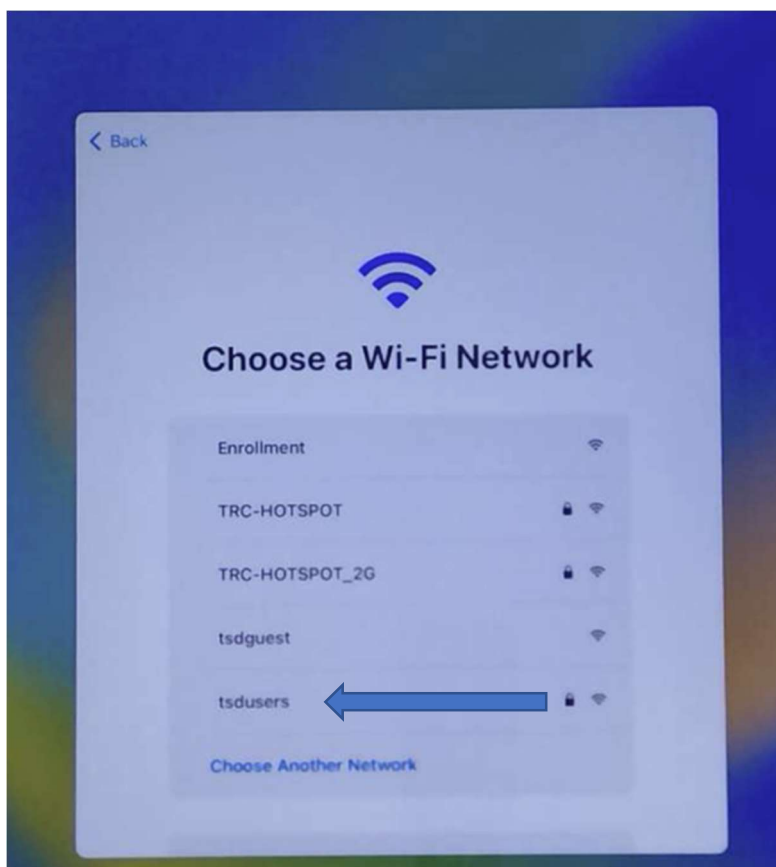
[Not Now](#)

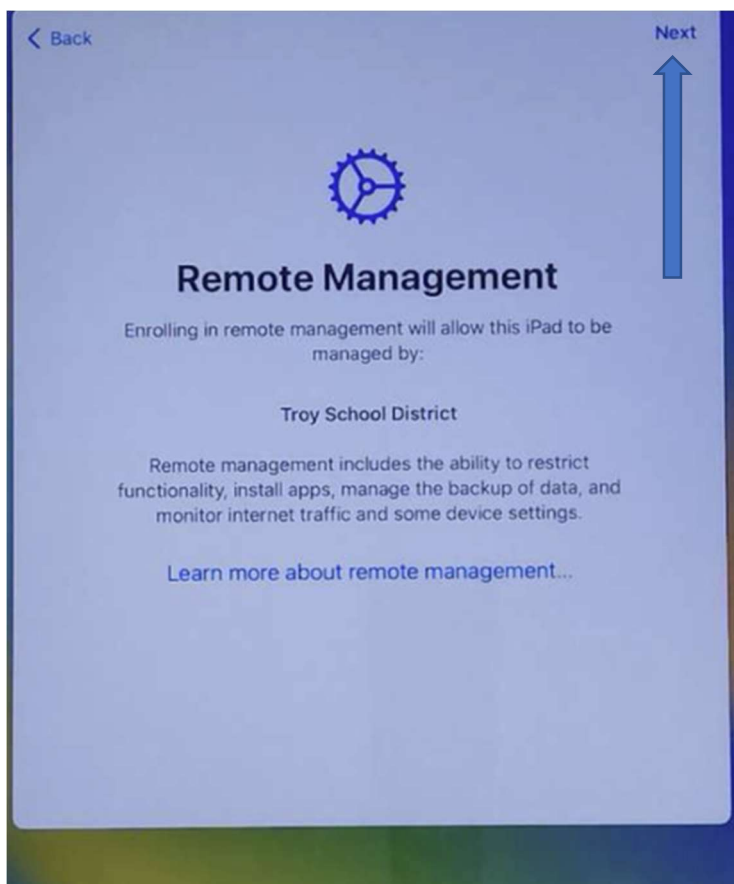
## Enroll Freshly Wiped iPad into Mosyle

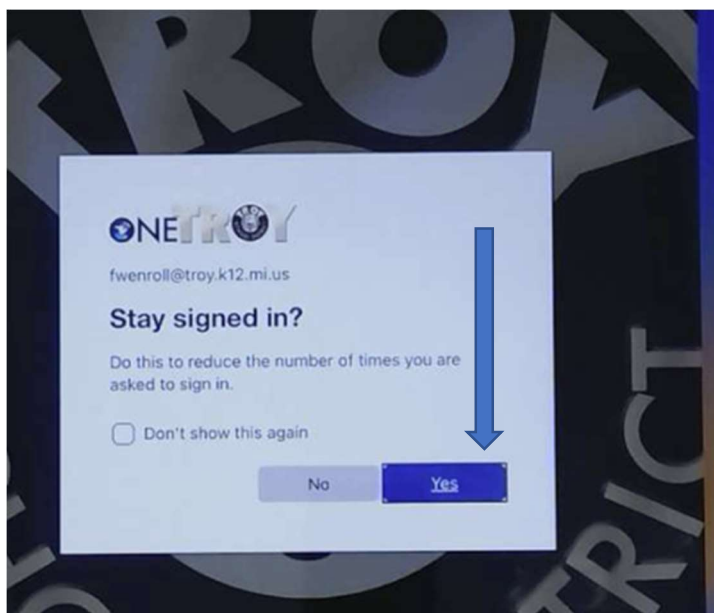
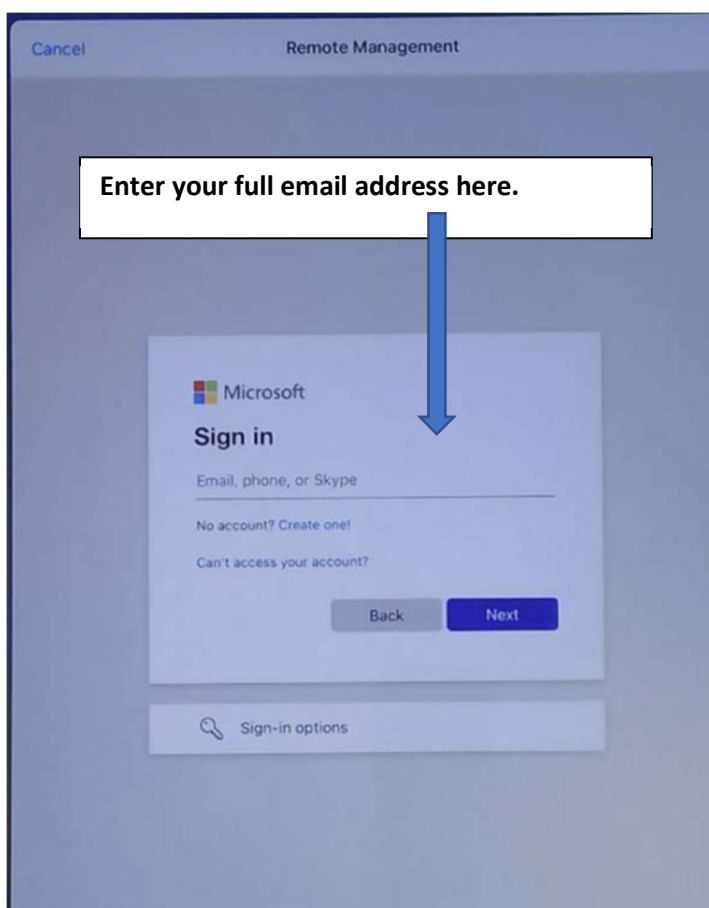


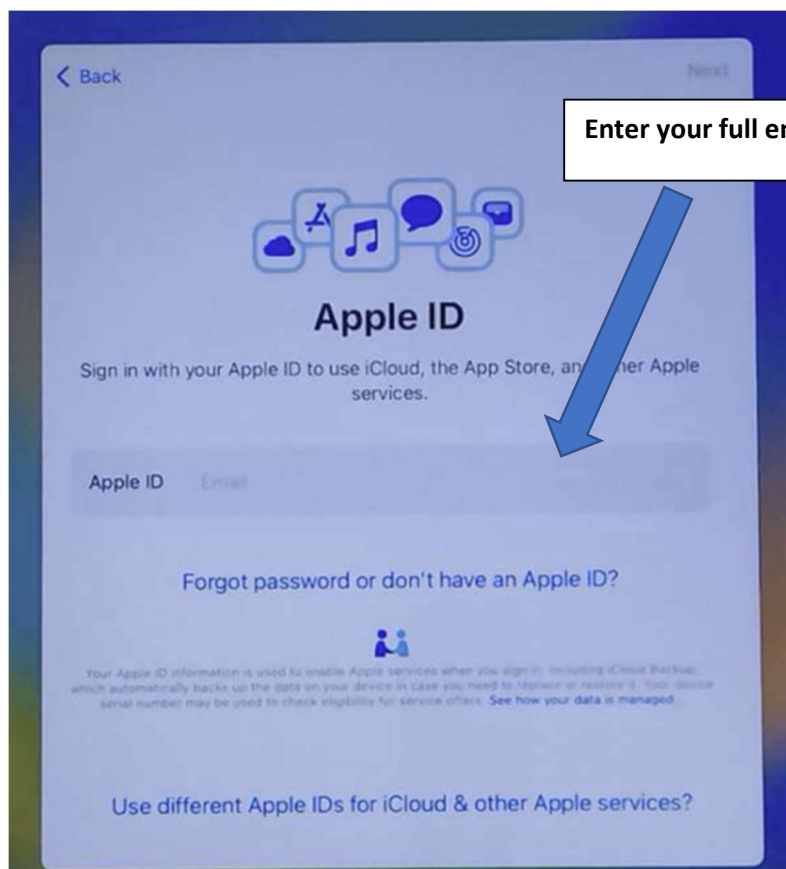


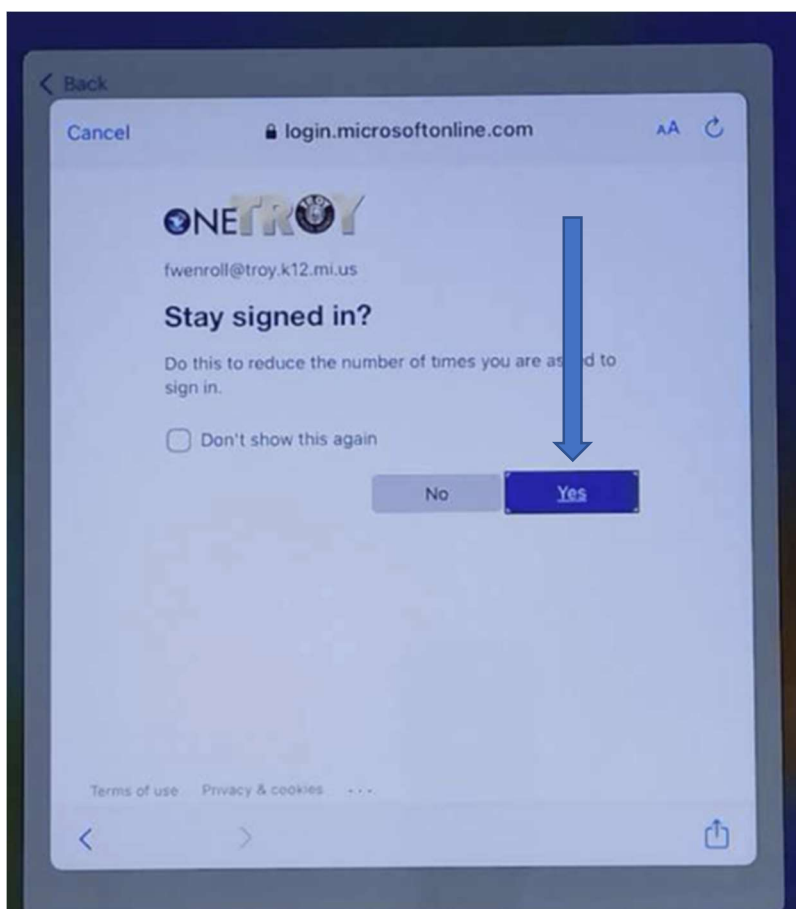
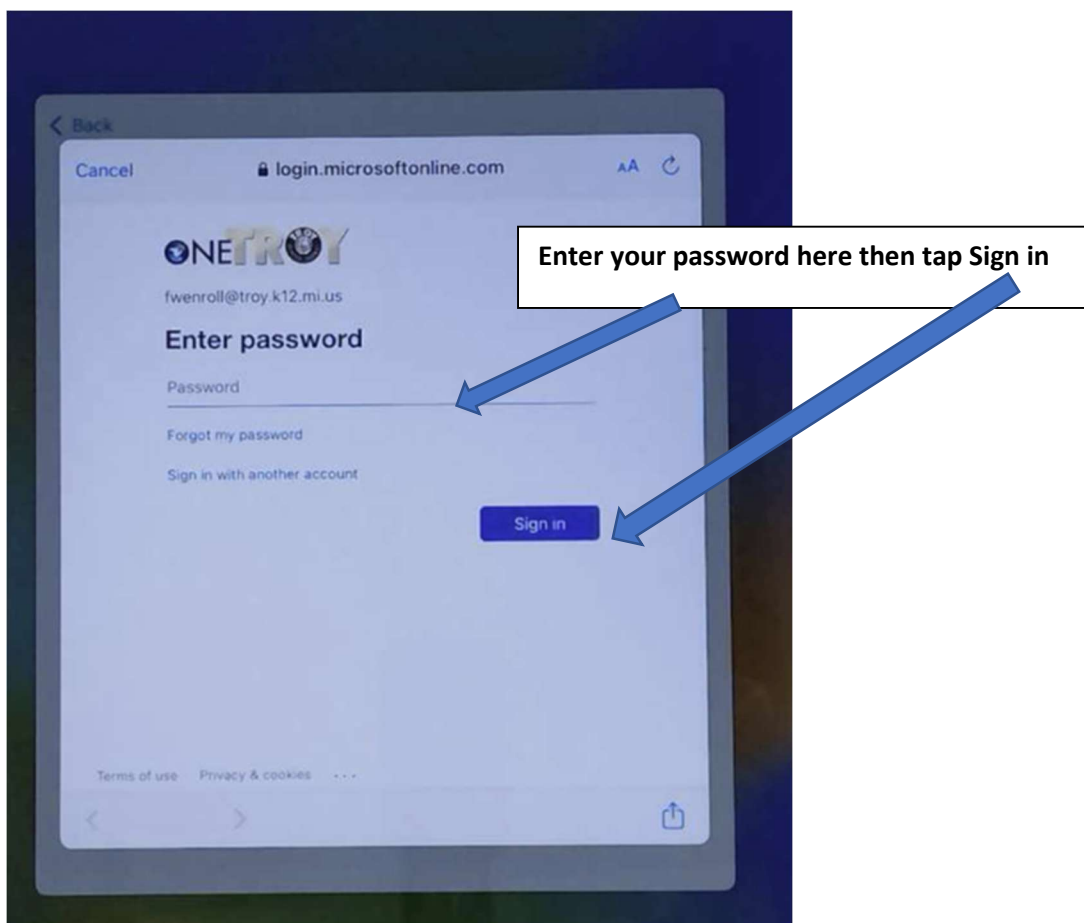












## Terms and Conditions

[Send by Email](#)

### IMPORTANT

Please read the following terms before using your iOS device. By using your iOS device, you are agreeing to be bound by the iOS Terms and Conditions. If you choose to use iCloud, you are agreeing to be bound by the iCloud Terms and Conditions.

#### A. iOS Terms and Conditions

#### B. iCloud Terms and Conditions

PLEASE READ THIS SOFTWARE LICENSE AGREEMENT ("LICENSE") CAREFULLY BEFORE USING YOUR iOS DEVICE OR DOWNLOADING THE SOFTWARE UPDATE ACCOMPANYING THIS LICENSE. BY USING YOUR iOS DEVICE OR DOWNLOADING A SOFTWARE UPDATE, AS APPLICABLE, YOU ARE AGREEING TO BE BOUND BY THE TERMS OF THIS LICENSE.

IF YOU DO NOT AGREE TO THE TERMS OF THIS LICENSE, DO NOT USE THE iOS DEVICE OR DOWNLOAD THE SOFTWARE UPDATE. IF YOU HAVE RECENTLY PURCHASED AN iOS DEVICE AND YOU DO NOT AGREE TO THE TERMS OF THE LICENSE, YOU MAY RETURN THE iOS DEVICE WITHIN THE RETURN PERIOD TO THE APPLE STORE OR AUTHORIZED DISTRIBUTOR WHERE YOU OBTAINED IT FOR A REFUND, SUBJECT TO APPLE'S RETURN POLICY FOUND AT

[Disagree](#)

[Agree](#)



## Location Services

Location Services allows Maps and other apps and services like Find My to gather and use data indicating your approximate location.

[About Location Services & Privacy...](#)

[Enable Location Services](#)

[Disable Location Services](#)