

REQUEST FOR QUOTATION	<h1>TROY SCHOOL DISTRICT</h1> <p>1140 RANKIN, TROY, MICHIGAN 48083</p> <p>248-823-4052</p> <p>FAX: 248-823-4077</p>	
No. 9641		
DUE DATE NO LATER THAN 11/2/09 3 p.m.		DATE 10/19/09

**REQUEST FOR QUOTE - NOT AN ORDER**

THIS FORM MUST BE UTILIZED WHEN RESPONDING TO THIS REQUEST  
BID ENVELOPE ENCLOSED

**THE RFQ NUMBER MUST APPEAR ON ALL QUOTATIONS AND RELATED CORRESPONDENCE, THIS IS NOT AN ORDER**

Quantity	DESCRIPTION	UNIT PRICE	AMOUNT
	<p>Please supply us with your bid to furnish the Troy School District with <b>FURNITURE AT INTERNATIONAL ACADEMY EAST</b></p> <p style="text-align: center;">Copies of the bid are available at:</p> <p style="text-align: center;"><a href="http://www.troy.k12.mi.us/purchasing/items_out_for_bid.htm">www.troy.k12.mi.us/purchasing/items_out_for_bid.htm</a> (left column)</p> <p style="text-align: center;">Bid recaps will be available at:</p> <p style="text-align: center;"><a href="http://www.troy.k12.mi.us/purchasing/items_out_for_bid.htm">www.troy.k12.mi.us/purchasing/items_out_for_bid.htm</a> (right column)</p> <p><b><i>FACSIMILE BID IS NOT ACCEPTABLE</i></b></p> <p>Bids will not be accepted if submitted after the deadline specified (local time) in the advertisement to bid or in the information to bidders. The late submission of a bid makes the bid nonrepsonsive and is a material defect which shall not be waived by the Board of Education. Delays in the mail will not be considered. All Late bids in the mail will be returned to the bidder unopened.</p> <p>Proposal for the submission of alternatives by vendors will be accepted and reviewed. However, if any substitution or departure is not clearly noted and described, it will be understood that the bid intends to exactly meet the specifications.</p> <p>The Board of Education shall be the sole judge as to whether the proposed goods are "equal" or "approved". Quotations must be mailed or delivered to the Purchasing Office, 1140 Rankin, Troy, MI 48083 no later than 3 p.m. on the date shown above. Michigan State Sales and Use Taxes and Federal Excise Taxes do not apply unless otherwise indicated. Exemption certificates will be furnished when necessary. This request imposes no obligations on the buyer. The Board of Education reserves the right to accept or reject any or all bids or to split awards by items or to accept bids, which will best serve the Board of Education.</p>		

**THIS AREA MUST BE FILLED IN**

DELIVERY TIME	PRICES FIRM FOR	NAME OF COMPANY	TELEPHONE NO.
TERMS		NO. & STREET	FAX #
FOB DELIVERED	ALL DELIVERY CHARGES MUST BE INCLUDED IN PRICES SHOWN	CITY, STATE & ZIP CODE	E-MAIL
CONTACT PERSON (PLEASE PRINT)		SIGNATURE	DATE

**Note:** All bidders are specifically reminded that a completed Affidavit of Bidder (Familial Disclosure) MUST be completed and submitted with the bid response. Failure to include a completed copy will be grounds for disqualification of bid. The Affidavit of Bidder is required to be notarized for construction bids only. All others only require completion and signature.

**AFFIDAVIT OF BIDDER**

The undersigned, the owner or authorized officer of \_\_\_\_\_ (the "Bidder), pursuant to the familial disclosure requirement provided in the \_\_\_\_\_ (the "School District") advertisement for construction bids, hereby represent and warrant except as provided below, that no familial relationships exist between the over(s) or any employee of \_\_\_\_\_ and any member of the Board of Education of the School District or the Superintendent of the School District.

List any Familial Relationships:

**BIDDER:**

\_\_\_\_\_

By: \_\_\_\_\_

Its: \_\_\_\_\_

STATE OF MICHIGAN )  
 )ss.  
COUNTY OF \_\_\_\_\_)

This instrument was acknowledged before me on the \_\_\_\_\_ day of \_\_\_\_\_, 2009, by \_\_\_\_\_.

\_\_\_\_\_

,Notary Public

\_\_\_\_\_ County, Michigan

My Commission Expires: \_\_\_\_\_

Acting in the County of: \_\_\_\_\_

**TROY SCHOOL DISTRICT  
FURNITURE – INTERNATIONAL ACADEMY EAST  
BID 9641**

The Troy School District is seeking qualified bids for various furniture to be placed at International Academy East. The following points are integral to this bid. Respondents not adhering to these parameters are subject to disqualification.

- Bidding of complete package is not required, though highly recommended. The District would PREFER to award to one vendor to ease delivery, installation, etc.
- All responses will be regarded as bid to specification unless **SPECIFICALLY** indicated on bid response. Any alternates being proposed **MUST** include complete cut sheet. Failure to include cut sheet with bid submission will be grounds for disqualification of entire bid.
- All bidders **MUST** complete the enclosed Familial Disclosure form and include with bid submission. Bids not containing this form will be automatically disqualified. The Familial Disclosure form is **NOT** required to be notarized for non-construction bids.
- Bidders are reminded that all furniture listed on this bid will require installation by the awarded vendor. Bids for items where vendor does not provide complete installation will be deemed incomplete and will be disqualified.
- Installation includes unloading from shipping vehicle, unpacking and placing into designated room. Any assembly is the sole responsibility of the awarded vendor.
- School personnel will not assist with unloading, unpacking, assembly or cleanup of items or packing materials.
- Awarded vendors are completely responsible for cleanup and removal of all packing materials. The school district will **NOT** provide dumpster space for packaging materials.
- School does not have loading docks, pallet lifts or forklifts. Bidders are specifically reminded that all unloading of purchased items is the sole responsibility of awarded vendor.
- Awarded vendors **MUST** coordinate with shipper to insure that all delivered products are installed **DAY OF DELIVERY**. Schools do **NOT** have storage space available for product.
- Minimum of 48 hours notice is required prior to the delivery of any items awarded on this bid.
- Delivery may be made from 7:30 am until 2:00 pm, Monday through Friday.
- To avoid interruption of classes, all items on this bid must be delivered and installed during one of the periods indicated below:
  - December 21 thru December 24, 2009
  - December 28 thru December 31, 2009
  - February 15 thru February 16, 2010

Schools may be accessible after 2:00pm on these days provided awarded vendor provides minimum one week notice prior to commencing installation.

- Bid prices are requested on a **PER UNIT BASIS**. Unit cost for delivery and installation are to be included on bid response. Quantities listed below are **MINIMUM** quantities to be ordered for. The district reserves the right to order additional quantities **PER these BUILDINGS and/or other district owned locations**. Bidders must specify the length of time they will hold pricing. The district will consider the timeline vendors will hold pricing when determining bid award.

- **Delivery address:**

**International Academy East  
1291 Torpey  
Troy, MI 48083**

**Troy School District**  
**Furniture - International Academy East**  
**Bid 9641**

Tag	Mfg	Part #	Part Description	Building	Qty	Alt	Unit Cost
			<b>MAIN OFFICE</b>				
1-A		NCI	90 Degree Baseraill Cover	AREA 1	1		
1-B	HON	19723R	Flagship Series Pedestal "R" Pull Freestanding B/B	AREA 1	2		
		.Q	PAINT: Light Gray				
1-C	HON	19823R	Flagship Series Pedestal "R" Pull Freestanding F/F	AREA 1	2		
		.Q	PAINT: Light Gray				
1-D	HON	NRW42	Raceway Wall Starter 42H	AREA 1	2		
		.Q	PAINT: Light Gray				
1-E	HON	NEP2429	End Panel Non-Handed 24D 29H	AREA 1	2		
		.Q	PAINT: Light Gray				
1-F	HON	9173R	30W 3-Drawer "R" Pull Lateral 30W 39-1/8H 18D	AREA 1	1		
		.Q	PAINT: Light Gray				
1-G	HON	9170R	30W 2-Drawer "R" Pull Lateral 30W 28H 18D	AREA 1	2		
		.Q	PAINT: Light Gray				
1-H	HON	919460	60W 18D Square Edge Laminate Top For Lateral File	AREA 1	1		
		.Q	Lam: Light Grey				
1-I	HON	919430	30W 18D Square Edge Laminate Top For Lateral File	AREA 1	1		
		.Q	Lam: Light Grey				
1-J	HON	HKB900	Maestro Keyboard	AREA 1	2		
		.P	Color: Black				
1-K	HON	NWT66	66H Wall Track	AREA 1	2		
		.Q	PAINT: Light Gray				
1-L	HON	38242N	60x36-1/4H Stack-on Full Clearance w/o Doors	AREA 1	1		
		.Q	PAINT: Light Gray				
1-M	HON	38247	2 30"W x 16"H Flipper Doors w/Lock For 60"W Stack-on	AREA 1	1		
		.Q	PAINT: Light Gray				
1-N	HON	NDSL29	Shared Leg	AREA 1	2		
		.Q	PAINT: Light Gray				
1-O	HON	NDSP29	Support Leg, non-handed, 29 1/2"H	AREA 1	1		
		.Q	PAINT: Light Gray				
1-P	HON	NREC	Panel Raceway End Cover	AREA 1	1		

**Troy School District**

**Furniture - International Academy East**

**Bid 9641**

<b>Tag</b>	<b>Mfg</b>	<b>Part #</b>	<b>Part Description</b>	<b>Building</b>	<b>Qty</b>	<b>Alt</b>	<b>Unit Cost</b>
		.Q	PAINT: Light Gray				
1-Q	HON	NRC42	Universal Connector 42H	AREA 1	1		
		.Q	PAINT: Light Gray				
1-R	HON	NWV93AARP	72" x 36" x 24" x 24" Right Corner Cove Worksurfac	AREA 1	1		
		.K1	LAM: Shadow Zephyr				
		.Q	EDGE: Light Gray				
1-S	HON	NCS1572P	3 MM COUNTERTOP 72W X 15D	AREA 1	2		
		.K1	LAM: Shadow Zephyr				
		.Q	EDGE: Light Gray				
1-T	HON	NWV93AALP	72" x 36" x 24" x 24" Left Corner Cove Worksurface	AREA 1	1		
		.K1	LAM: Shadow Zephyr				
		.Q	EDGE: Light Gray				
1-U	HON	NWR2436P	PVC Rectangular Worksurface 24D x 36W	AREA 1	1		
		.K1	LAM: Shadow Zephyr				
		.Q	EDGE: Light Gray				
1-V	HON	NWR2466P	PVC Rectangular Worksurface 24D x 66W	AREA 1	1		
		.K1	LAM: Shadow Zephyr				
		.Q	EDGE: Light Gray				
1-W	HON	NWR2442P	PVC Rectangular Worksurface 24D x 42W	AREA 1	1		
		.K1	LAM: Shadow Zephyr				
		.Q	EDGE: Light Gray				
1-X	HON	6213	Low-Back,Dual Action,Lumbar,Pneu Synchro,Arms	AREA 1	2		
		.@	CASTER: (Standard)				
		\$(M1)	GRADE: M1 UPHOLSTERY				
		.X1	UPH: Hon Smart Textile M1				
		A220	COLOR: Basis Amethyst				
		.T	FRAME: Black				
1-Z	HON	NP4236F	Cableway Fabric Panel 42H 36W	AREA 1	4		
		\$(4)	GRADE: Fabric Grade IV				
		.TW	FABRIC: Twigs				
		14	COLOR: Sycamore				
		.Q	Trim: Light Gray				

**Troy School District**

**Furniture - International Academy East**

**Bid 9641**

<b>Tag</b>	<b>Mfg</b>	<b>Part #</b>	<b>Part Description</b>	<b>Building</b>	<b>Qty</b>	<b>Alt</b>	<b>Unit Cost</b>
1-AA	HON	T60	20H Tackboard for 60W Stack-on	AREA 1	1		
		\$(4)	GRADE: Fabric Grade IV				
		.TW	FABRIC: Twigs				
		14	COLOR: Sycamore				
		.Q	PAINT: Light Gray				
1-BB	HON	NP4224F	Cableway Fabric Panel 42H 24W	AREA 1	1		
		\$(4)	GRADE: Fabric Grade IV				
		.TW	FABRIC: Twigs				
		14	COLOR: Sycamore				
		.Q	Trim: Light Gray				
			<b>CONFERENCE ROOM</b>				
2-A	HON	LB4896G	96"L x 48"W Boat Shaped Laminate Top	AREA 2	1		
		.Z	LAM: Columbian Walnut				
2-B	HON	BLS02	Slab base for 144"L, 120"L, OR 96"L TOP	AREA 2	1		
		.Z	LAM: Columbian WALnut				
2-C	HON	4703	Mang., Mid-Back, Pneumatic, Swivel Inverse Synch	AREA 2	6		
		.@	CASTER: (Standard)				
		\$(M1)	GRADE: M1 UPHOLSTERY				
		.TX	UPH: Context				
		17	COLOR: Jam 17				
		.T	FRAME: Black				
			<b>IB COORDINATOR</b>				
3-A	HON	10502	Floorstanding Full Height Ped B/B/F 15-5/8W x 22-3/4D	AREA 3	2		
		.Z	LAM: Columbian Walnut				
3-B	HON	10579	Desk Shell 66W x 30D x 29-1/2H	AREA 3	2		
		.ZZ	LAM: Columbian Walnut				
3-C	HON	105681	Return Shell 29-1/2H x 41W x 24D	AREA 3	2		
		.ZZ	LAM: Columbian Walnut				
3-D	HON	10504	Floorstanding Full Height Ped F/F 15-5/8W x 22-3/4D	AREA 3	2		
		.Z	LAM: Columbian Walnut				

**Troy School District**

**Furniture - International Academy East**

**Bid 9641**

<b>Tag</b>	<b>Mfg</b>	<b>Part #</b>	<b>Part Description</b>	<b>Building</b>	<b>Qty</b>	<b>Alt</b>	<b>Unit Cost</b>
3-E	HON	10534K	72 x 37 1/8" Stack-On Storage,4-Door,Locking,ETA	AREA 3	2		
		.ZZ	LAM: Columbian Walnut				
3-F	HON	105856	Back enclosure for 72"W Stack on Storage	AREA 3	2		
		.Z	LAM: Columbian Walnut				
3-G	HON	HKB900	Maestro Keyboard	AREA 3	2		
		.P	Color: Black				
3-H	HON	6212	High-Back,Dual Action,Lumbar,Pneu Synchro,Arms	AREA 3	2		
		.@	CASTER: (Standard)				
		\$(M1)	GRADE: M1 UPHOLSTERY				
		.X1	UPH: Hon Smart Textile M1				
		A220	COLOR: Basis Amethyst				
		.T	FRAME: Black				
3-I	HON	90056	Tackboard for 72"W Stack on Storage Back Enclosure	AREA 3	2		
		\$(4)	GRADE: Fabric Grade IV				
		.TW	FABRIC: Twigs				
		14	COLOR: Sycamore				
			<b>ASSISTANT PRINCIPAL</b>				
4-A	HON	10502	Floorstanding Full Height Ped B/B/F 15-5/8W x 22-3/4D	AREA 4	1		
		.Z	LAM: Columbian Walnut				
4-B	HON	10504	Floorstanding Full Height Ped F/F 15-5/8W x 22-3/4D	AREA 4	1		
		.Z	LAM: Columbian Walnut				
4-C	HON	10542	Credenza Shell 66W x 24D x 29-1/2H	AREA 4	1		
		.ZZ	LAM: Columbian Walnut				
4-D	HON	10570	Bridge 47W x 24D x 29-1/2H	AREA 4	1		
		.ZZ	LAM: Columbian Walnut				
4-E	HON	10579	Desk Shell 66W x 30D x 29-1/2H	AREA 4	1		
		.ZZ	LAM: Columbian Walnut				
4-F	HON	10534K	72 x 37 1/8" Stack-On Storage,4-Door,Locking,ETA	AREA 4	1		
		.ZZ	LAM: Columbian Walnut				
4-G	HON	105856	Back enclosure for 72"W Stack on Storage	AREA 4	1		
		.Z	LAM: Columbian Walnut				

**Troy School District**

**Furniture - International Academy East**

**Bid 9641**

<b>Tag</b>	<b>Mfg</b>	<b>Part #</b>	<b>Part Description</b>	<b>Building</b>	<b>Qty</b>	<b>Alt</b>	<b>Unit Cost</b>
4-H	HON	HKB900	Maestro Keyboard	AREA 4	1		
		.P	Color: Black				
4-I	HON	6216	Guest, Sled Base, Arms	AREA 4	2		
		\$(M1)	GRADE: M1 UPHOLSTERY				
		.TX	UPH: Context				
		17	COLOR: Jam 17				
		.T	FRAME: Black				
4-J	HON	6212	High-Back,Dual Action,Lumbar,Pneu Synchro,Arms	AREA 4	1		
		.@	CASTER: (Standard)				
		\$(M1)	GRADE: M1 UPHOLSTERY				
		.X1	UPH: Hon Smart Textile M1				
		A220	COLOR: Basis Amethyst				
		.T	FRAME: Black				
4-K	HON	90056	Tackboard for 72"W Stack on Storage Back Enclosure	AREA 4	1		
		\$(4)	GRADE: Fabric Grade IV				
		.TW	FABRIC: Twigs				
		14	COLOR: Sycamore				
			<b>COUNSELING RECEPTION AREA</b>				
5-A	HON	19723R	Flagship Series Pedestal "R" Pull Freestanding B/B	AREA 5	1		
		.Q	PAINT: Light Gray				
5-B	HON	19823R	Flagship Series Pedestal "R" Pull Freestanding F/F	AREA 5	1		
		.Q	PAINT: Light Gray				
5-C	HON	NRW42	Raceway Wall Starter 42H	AREA 5	1		
		.Q	PAINT: Light Gray				
5-D	HON	NEP2429	End Panel Non-Handed 24D 29H	AREA 5	1		
		.Q	PAINT: Light Gray				
5-E	HON	9190R	42W 2-Drawer "R" Pull Lateral 42W 28H 18D	AREA 5	1		
		.Q	PAINT: Light Gray				
5-F	HON	919442	42W 18D Square Edge Laminate Top For Lateral File	AREA 5	1		
		.Q	Lam: Light Grey				
5-G	HON	HKB900	Maestro Keyboard	AREA 5	1		



**Troy School District**

**Furniture - International Academy East**

**Bid 9641**

<b>Tag</b>	<b>Mfg</b>	<b>Part #</b>	<b>Part Description</b>	<b>Building</b>	<b>Qty</b>	<b>Alt</b>	<b>Unit Cost</b>
			<b>COUNSELING OFFICE #1</b>				
6-A	HON	LD42G	42" dia Round Laminate Top	AREA 6	1		
		.Z	LAM: Columbian Walnut				
6-B	HON	10502	Floorstanding Full Height Ped B/B/F 15-5/8W x 22-3/4D	AREA 6	1		
		.Z	LAM: Columbian Walnut				
6-C	HON	10504	Floorstanding Full Height Ped F/F 15-5/8W x 22-3/4D	AREA 6	1		
		.Z	LAM: Columbian Walnut				
6-D	HON	105327	Stack on Storage 78"W for 78D Workstations	AREA 6	1		
		.ZZ	LAM: Columbian Walnut				
6-E	HON	10561	Return Shell 29-1/2H x 47W x 24D	AREA 6	1		
		.ZZ	LAM: Columbian Walnut				
6-F	HON	105857	Back enclosure for 78"W Stack on Storage	AREA 6	1		
		.Z	LAM: Columbian Walnut				
6-G	HON	BLX02	"X" Base for 144"L, 120"L, 96"L, 48", 42" Round To	AREA 6	1		
		.Z	LAM: Columbian WALnut				
6-H	HON	10579	Desk Shell 66W x 30D x 29-1/2H	AREA 6	1		
		.ZZ	LAM: Columbian Walnut				
6-I	HON	HKB900	Maestro Keyboard	AREA 6	1		
		.P	Color: Black				
6-J	HON	6216	Guest, Sled Base, Arms	AREA 6	2		
		\$(M1)	GRADE: M1 UPHOLSTERY				
		.TX	UPH: Context				
		17	COLOR: Jam 17				
		.T	FRAME: Black				
6-K	HON	90057	Tackboard for 78"W Stack on Storage Back Enclosure	AREA 6	1		
		\$(4)	GRADE: Fabric Grade IV				
		.TW	FABRIC: Twigs				
		14	COLOR: Sycamore				
6-L	HON	6213	Low-Back,Dual Action,Lumbar,Pneu Synchro,Arms	AREA 6	1		
		.@	CASTER: (Standard)				
		\$(M1)	GRADE: M1 UPHOLSTERY				
		.X1	UPH: Hon Smart Textile M1				

**Troy School District**

**Furniture - International Academy East**

**Bid 9641**

<b>Tag</b>	<b>Mfg</b>	<b>Part #</b>	<b>Part Description</b>	<b>Building</b>	<b>Qty</b>	<b>Alt</b>	<b>Unit Cost</b>
		A220	COLOR: Basis Amethyst				
		.T	FRAME: Black				
			<b>COUNSELING OFFICE #2</b>				
7-A	HON	LD42G	42" dia Round Laminate Top	AREA 7	1		
		.Z	LAM: Columbian Walnut				
7-B	HON	10502	Floorstanding Full Height Ped B/B/F 15-5/8W x 22-3/4D	AREA 7	1		
		.Z	LAM: Columbian Walnut				
7-C	HON	10504	Floorstanding Full Height Ped F/F 15-5/8W x 22-3/4D	AREA 7	1		
		.Z	LAM: Columbian Walnut				
7-D	HON	105327	Stack on Storage 78"W for 78D Workstations	AREA 7	1		
		.ZZ	LAM: Columbian Walnut				
7-E	HON	10561	Return Shell 29-1/2H x 47W x 24D	AREA 7	1		
		.ZZ	LAM: Columbian Walnut				
7-F	HON	105857	Back enclosure for 78"W Stack on Storage	AREA 7	1		
		.Z	LAM: Columbian Walnut				
7-G	HON	BLX02	"X" Base for 144"L, 120"L, 96"L, 48", 42" Round To	AREA 7	1		
		.Z	LAM: Columbian Walnut				
7-H	HON	10579	Desk Shell 66W x 30D x 29-1/2H	AREA 7	1		
		.ZZ	LAM: Columbian Walnut				
7-I	HON	HKB900	Maestro Keyboard	AREA 7	1		
		.P	Color: Black				
7-J	HON	6216	Guest, Sled Base, Arms	AREA 7	2		
		\$(M1)	GRADE: M1 UPHOLSTERY				
		.TX	UPH: Context				
		17	COLOR: Jam 17				
		.T	FRAME: Black				
7-K	HON	90057	Tackboard for 78"W Stack on Storage Back Enclosure	AREA 7	1		
		\$(4)	GRADE: Fabric Grade IV				
		.TW	FABRIC: Twigs				
		14	COLOR: Sycamore				
7-L	HON	6213	Low-Back,Dual Action,Lumbar,Pneu Synchro,Arms	AREA 7	1		

**Troy School District**

**Furniture - International Academy East**

**Bid 9641**

<b>Tag</b>	<b>Mfg</b>	<b>Part #</b>	<b>Part Description</b>	<b>Building</b>	<b>Qty</b>	<b>Alt</b>	<b>Unit Cost</b>
		.@	CASTER: (Standard)				
		\$(M1)	GRADE: M1 UPHOLSTERY				
		.X1	UPH: Hon Smart Textile M1				
		A220	COLOR: Basis Amethyst				
		.T	FRAME: Black				
			Freight (Areas 1-7)				
			Installation (Areas 1-7)				
<b>TOTAL (AREAS 1-7)</b>							
<b>TEACHER WORKROOM</b>							
8-A	HON	34002R	45-1/4"W x 24"D x 29-1/2"H Single Pedestal Desk - 2R	AREA 8	24		
		.M	LAM: Medium Oak				
		.Q	PAINT: Light Gray				
8-B	HON	5901	Task, Swivel, Pneumatic	AREA 8	24		
		.@	CASTER: (Standard)				
		\$(2)	GRADE: II UPHOLSTERY				
		.BK	UPH: Classic				
		85	COLOR: Blue				
		.T	FRAME: Black				
			Freight (Area 8)				
			Installation (Area 8)				
<b>TOTAL (AREA 8)</b>							
<b>MUSIC FURNITURE</b>							
9-A	NPS	8210TA82BR82	Music Chair with Tablet Arm		80		
9-B	Wenger	1020000	Bravo™ Music Stand, Black/Black		40		
			Freight				
			Installation				
<b>TOTAL MUSIC FURNITURE</b>							

**Troy School District**  
**Furniture - International Academy East**  
**Bid 9641**

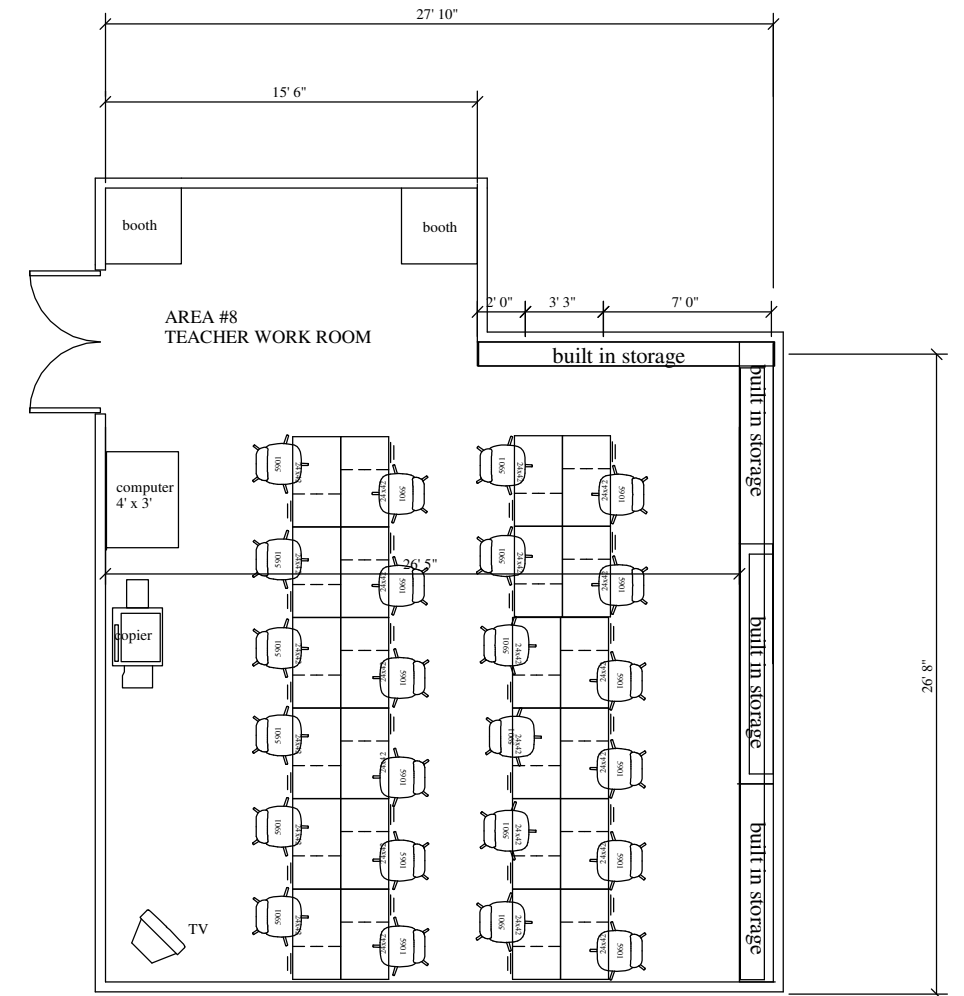
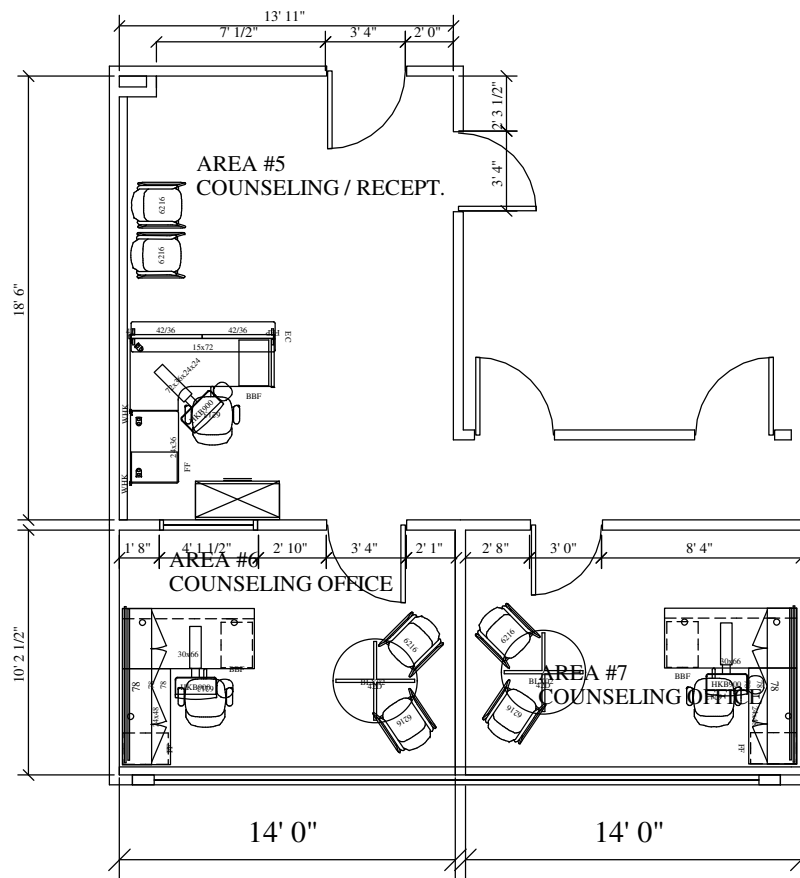
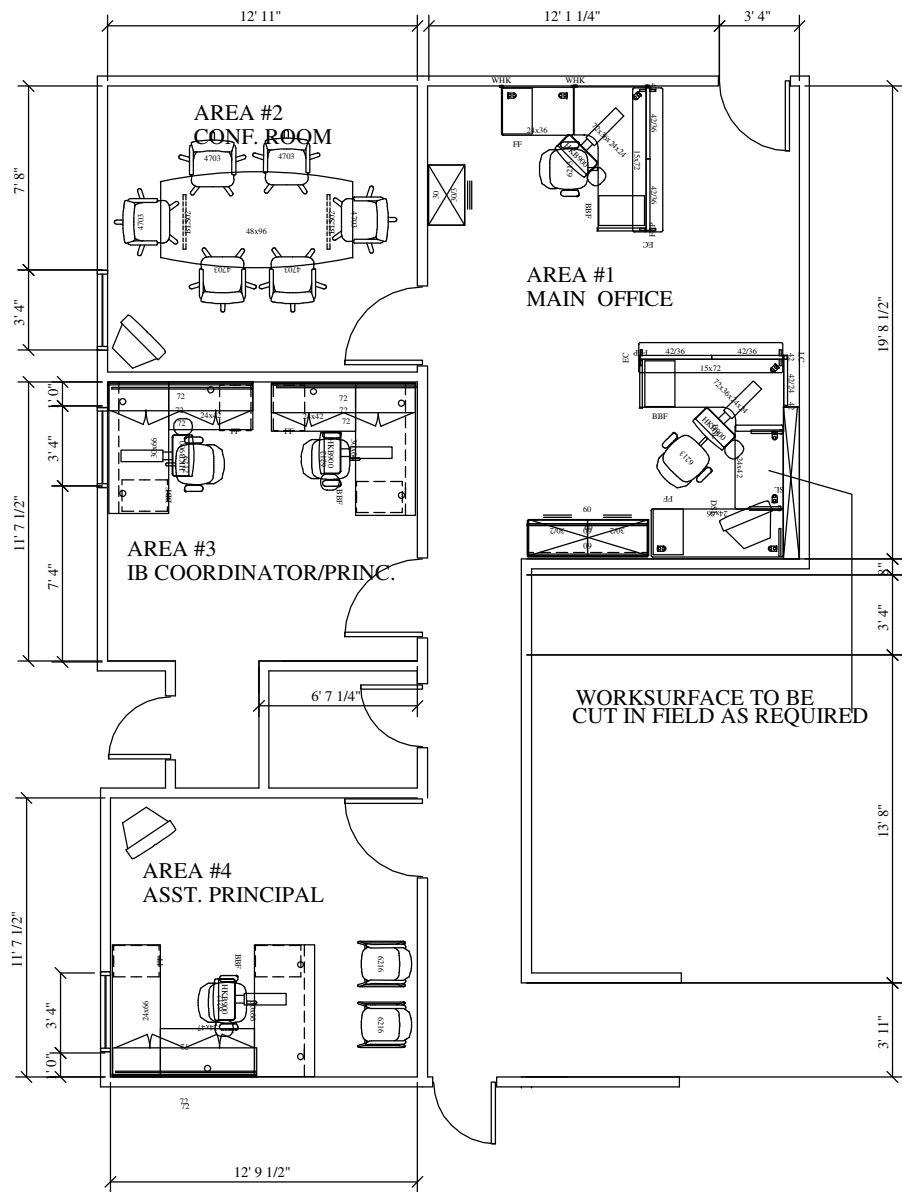
Tag	Mfg	Part #	Part Description	Building	Qty	Alt	Unit Cost
			<b>PHYSICS FURNITURE</b>				
10-A	Silver Street		60" Round Octagon Table with Drawer Storage		1		
			Top: HPL 1 1/4" Worksurface				
			Frame color to match existing cabinetry				
			Top color: Black				
			Banding: 3MM PVC Edgeband				
			Height of unit: 36" high				
			Drawer Units: 4 units consisting of 5 drawers each unit 17 1/3"W x 15 3/16"D with 4" toe kick				
10-B	Silver Street		Science Tables 30" x 72" x 36"H		10		
			Top: HPL 1 1/4" Worksurface				
			Standard Wood H Frame Base				
			Top Color: Black				
			Frame color to match existing cabinetry				
			Freight				
			Installation				
<b>TOTAL PHYSICS</b>							

Company: \_\_\_\_\_

Address: \_\_\_\_\_

City: \_\_\_\_\_ State: \_\_\_\_\_ Zip: \_\_\_\_\_

Phone: \_\_\_\_\_ Fax: \_\_\_\_\_



**T ROY SCHOOL DISTRICT**  
International Academy East

Scale: 1/8" = 1' - 0"

date: